

28 November 2025

Newsletter

KEY HIGHLIGHTS

Government of Meghalaya
Meghalaya Basin Development Authority | Meghalaya Basin Management Agency

The Meghalaya Basin Management Agency (MBMA) and Meghalaya Basin Development Authority (MBDA) implement citizen-centric, community-driven projects to improve the quality of life for Meghalaya's citizens, bridge developmental gaps, and promote natural resource management, catchment area protection, forest management, agroecological practices, and market development. Incorporated under the State's Planning, Investment Promotion & Sustainable Development Department, MBMA and MBDA partner with multilateral agencies, banks, non-profits, UN organizations, government departments, and community groups to implement their works.

Coverage spans across Meghalaya through Externally Aided Projects (EAP) such as the IFAD-supported Meghalaya Livelihoods and Access to Markets Project (Megha-LAMP), the JICA-funded Project for Community-based Forest Management and Livelihood Improvement in Meghalaya (MegLIFE), and the KfW Development Bank-funded projects - the Sustainable Land Management Meghalaya Project (SLM) and the Protection of Vulnerable Catchment Area in Meghalaya (MegARISE) Project.

State programmes being implemented include the Promotion and Incubation of Market-Driven Enterprises (PRIME), the Farmers Collectivization for Upscaling Production and Marketing Systems (FOCUS), the Smart Village Movement (SVM), the Grassroot Level response Towards Ecosystem Enhancement and Nurturing (GREEN Meghalaya), the Cluster Development Programme (CDP), the Pradhan Mantri Janjatiya Vikas Mission (PMJVM) in Meghalaya, and the Meghalaya State Bamboo Mission (MSBM).

EXTERNALLY AIDED PROJECTS

Megha-LAMP

Meghalaya Livelihoods and Access to Markets Project

MegLIFE

Project for Community-based Forest Management and Livelihood Improvement in Meghalaya

MegARISE

Protection of Vulnerable Catchment Areas in Meghalaya Project

SLM

Sustainable Land Management Meghalaya Project

WORKS

PRIME

Promotion and Incubation of Market Driven Enterprises

FOCUS

Farmers Collectivization for Upscaling of Production and Marketing Systems

SVM

Smart Village Movement

GREEN Meghalaya

Grassroot Level response Towards Ecosystem Enhancement and Nurturing Meghalaya

CDP

Cluster Development Programme

PMJVM

Pradhan Mantri Janjatiya Vikas Mission in Meghalaya

MSBM

Meghalaya State Bamboo Mission

STATE PROGRAMMES



MeghaLAMP
Meghalaya Livelihoods Access to Market Project
14 September 2016-2020



GREEN
MEGHALAYA
Grassroot Level Response towards
Ecosystem Enhancement and
Nurturing Meghalaya

Smart Village Movement™
In Alliance With Berkeley Haas



PRIME
MEGHALAYA



KEY UPDATES

PROJECT FOR COMMUNITY-BASED FOREST MANAGEMENT AND LIVELIHOOD IMPROVEMENT IN MEGHALAYA



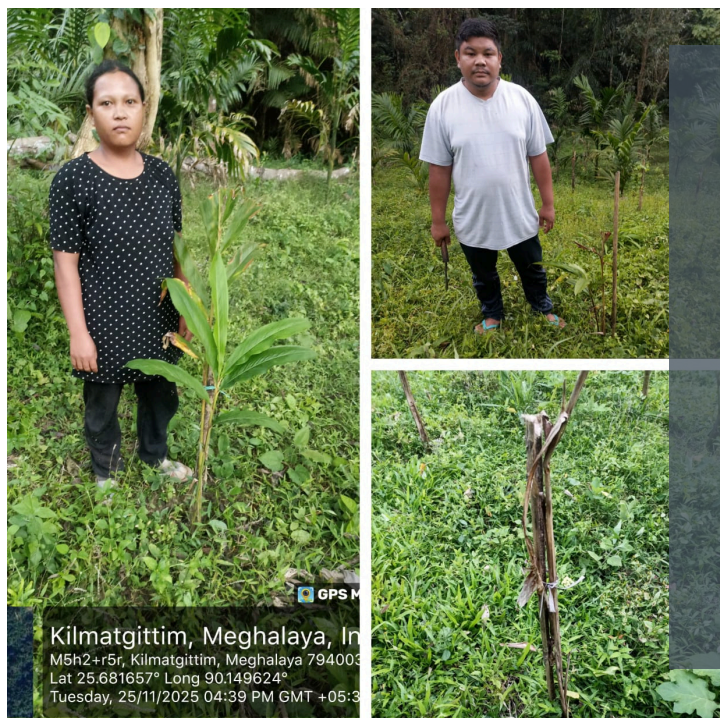
HIMACHAL JICA DELEGATION VISITS MEGLIFE AND COMMUNITY INSTITUTIONS

“From 24th to 26th November 2025, a delegation of 10 officials from the Himachal JICA Project, including a Program Manager, Subject Matter Experts, Field Technical Unit Coordinators, and community representatives, visited the MegLIFE Project and community institutions in Ri-Bhoi District. The team was briefed on project activities such as Springshed development, the Aroma Mission, MIS and GIS-based monitoring, IVCS strengthening, and Forest Management Plan interventions. They also visited key IVCSs and interacted with SHGs and community groups to understand livelihood initiatives, observe organized functioning, and review facilities. The visits provided the delegation with a comprehensive understanding of project implementation, community participation, and local enterprise efforts driving project outcomes.”

Himachal JICA Delegation Visits MegLIFE

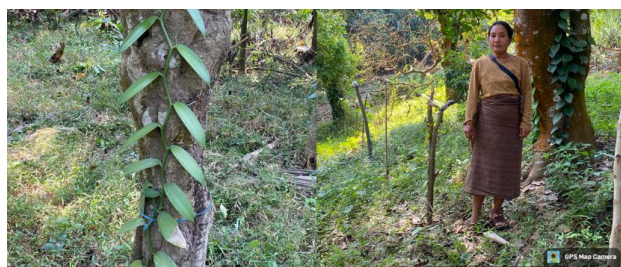
SNIPPETS

MEGHALAYA LIVELIHOODS AND ACCESS TO MARKETS PROJECT



ASSESSING CARDAMOM PLANTATION PROGRESS UNDER CM FARM+

A field visit was conducted on 25 November 2025 at Rongchugre Village, Dadenggre Block for data collection under the CM Farm+ (Small & Large Cardamom) 2025 initiative. During the visit, it was observed that 400 seedlings had been distributed to each farmer as part of the plantation support. However, more than 30% of the seedlings were found damaged due to cattle grazing by cows and goats, primarily caused by the absence of proper fencing and field protection measures, affecting the overall plantation progress.



Field Visit for Vanilla Plantation Monitoring

On 21st November 2025, a field visit was conducted to Rongchigre Village, Selsella Block, West Garo Hills for geotagging and data collection of vanilla plantations. The team mapped plantation sites, verified progress, and updated beneficiary records to support accurate monitoring.



Field Visit for Cinnamon Plantation Geo-tagging

From 22nd to 25th November 2025, a field visit was conducted in Sampalgre Village, Gambegre Block, West Garo Hills to geotag cinnamon plantation sites and collect plantation progress and beneficiary data.



Field Visit for Large Cardamom Geo-fencing

On 25th & 27th November 2025, a field visit was conducted in Waribokgre Village, Rongram Block, West Garo Hills to carry out geo-fencing of plantation plots and collect data for the Large Cardamom initiative.

PROGRESS OVERVIEW

MEGHALAYA LIVELIHOODS AND ACCESS TO MARKETS PROJECT



503
IVCS with **113,333**
shareholders;
₹46.10 Cr loan
amount

200
IVCS identified as
Business
Correspondents of
MCAB;
65 IVCS initiated

7
PRIME Hubs under
MLAMP in progress;
31 identified
statewide

297
CMCs established
with **₹14.73 Cr**
working capital
provided

173
CHCs established
benefiting over
13,900 households

50
Farmers' Markets
planned with
19 under construction

75
warehouses
& **23**
CFCs in pipeline

14
Cooperatives
supported with large
processing units

13,181
Producer Groups
across **3500** villages
with
1,34,098 members

2022-25 total trade:
10.15 lakh kg
of produce worth over
₹9 Cr

70
Agri Response
Vehicles activated

52%
Shareholder women
members in IVCS; **87%**
IVCS with women in
Managing committees

*IVCS: Integrated Village Cooperative Society *MCAB: Meghalaya Cooperative Apex Bank
*PRIME: Promotion and Incubation of Market Driven Enterprises *CFC: Common Facility Centre

SNIPPETS

PROJECT FOR COMMUNITY-BASED FOREST MANAGEMENT AND LIVELIHOOD IMPROVEMENT IN MEGHALAYA



TRAINING OF TRAINERS ON VPIC MANAGEMENT

On 26-27 November 2025, a two-day Training of Trainers under the MegLIFE initiative focused on strengthening village governance and enhancing community institution functioning. The programme covered roles of Community-Based Organisations, Village Employment Councils, and VCFs, as well as by-laws, Executive Committee elections, soil and water conservation, and grievance redressal. Participants were equipped to lead upcoming cluster-level refresher sessions across villages.



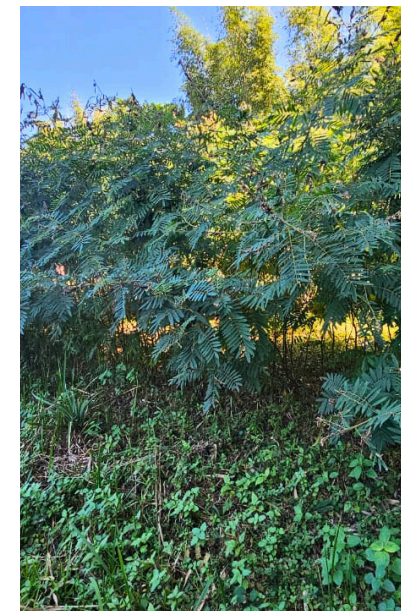
Interaction Session with Deputy Project Director, MeghaLAMP on Grassroots Market Practices

On 21 November 2025, MeghLIFE staff engaged with the Deputy Project Director of MLAMP to strengthen understanding of grassroots market dynamics. The session covered supply and demand, engagement with service providers, and identification of key local stakeholders, providing insights to enhance field-level market orientation and implementation capacity.



Field Visit to Umden Khasi and Bleishah Villages - Umling Block

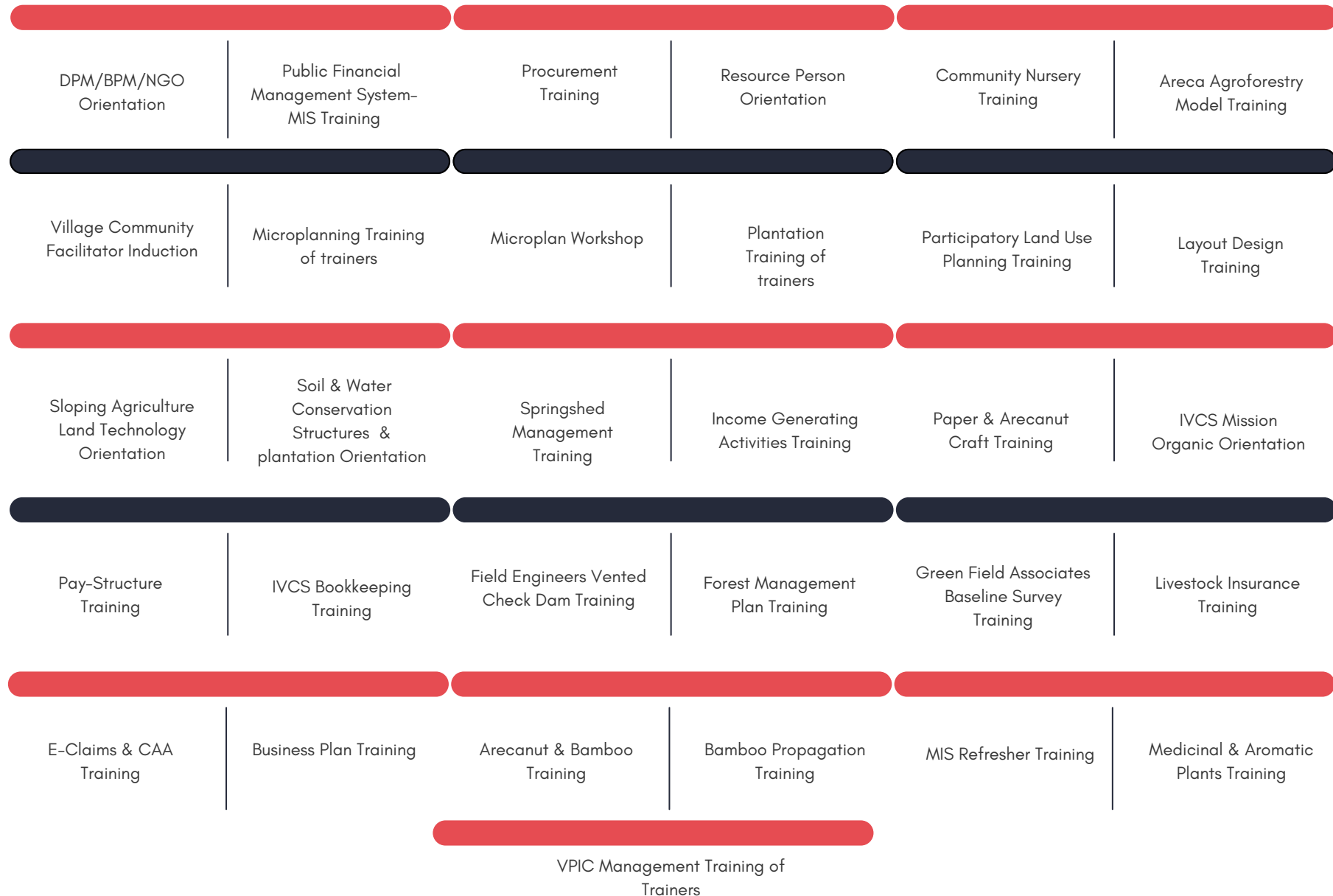
On 20 November 2025, the MegLIFE team, along the Umling Forester, visited Umden Khasi and Bleishah villages. The team interacted with Village Project Implementation Committee members and inspected key sites, including ponds, RCC tank platforms, the Community Hall, SHG Candle-Making Unit, and SALT Farm, observing progress and community participation in livelihoods, natural resource management, and village development activities.



PROGRESS OVERVIEW

PROJECT FOR COMMUNITY-BASED FOREST MANAGEMENT AND LIVELIHOOD IMPROVEMENT IN MEGHALAYA

TRAINING & CAPACITY DEVELOPMENT ACTIVITIES CONDUCTED UNDER THE MEGLIFE PROJECT



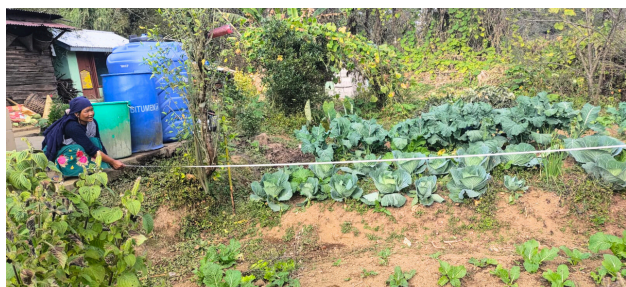
SNIPPETS

PROTECTION OF VULNERABLE CATCHMENT AREAS IN MEGHALAYA PROJECT



FIELD ASSESSMENT OF PROPOSED INTERVENTION SITES

On 20 November 2025, Ganol Engineers, led by the Executive Director (Technical), MBDA, along with the Catchment Management Unit, Ganolteam, conducted a field visit to Selbalgre, Selbal Nokat, and Rengsangre Village Project Implementation Committee to assess feasibility for proposed project interventions. Five shortlisted sites were jointly inspected and finalized, evaluating water storage capacity, potential household benefits, environmental sustainability, and tributary contribution to the Ganol River. Recommendations were provided to optimize site selection for maximum community benefit and long-term impact.



Field Visits for Financial Participatory Appraisal 2 & 3 Implementation

On 24 November 2025, Field Engineers (FEs) and External Experts (EEs) visited Madan Lyngdoh, Madan Football, Mawjrang, Mawmysiang, Tiewlieh, Lyngkienshie, Nongthymmai Pdeng, Laitkynsew, and Lumkyntung to initiate works under FPA 2 & 3. On 25 November, the team visited Pamlakrai Mawbynna, Myllem Block, to begin implementation under FPA 2.



Spring Monitoring Activities at Myllem & Khatarshnong Laitkroh

On the 20th and 21st November 2025, the Umiew team, along with Village Community Facilitator members, conducted spring monitoring at Mawwan, Myllem Bloc and Warbah Village, Khatarshnong Laitkroh. The team assessed spring conditions and collected essential data to support ongoing water resource management initiatives.



Field Inspection for Financial Participatory Appraisal (FPA) 2 & 3 Winning Ideas

On 20 November 2025, the Catchment Management Unit Team conducted field inspections at Mawwan, Mawtharia, and Rngi Shyllong villages, Myllem Block, and on 21 November, at Iewpomtiah and Umtngew, Mawryngkneng subdivision. The visits assessed site feasibility for the FPA 2 & 3 Winning Ideas initiatives.

SNIPPETS

PROTECTION OF VULNERABLE CATCHMENT AREAS IN MEGHALAYA PROJECT



SITE ASSESSMENT VISIT TO MYLLIEM MAWSAWA UNDER VLAMP

The Umiew team, accompanied by the Executive Director, visited Mylliem Mawsawa to review sites proposed by the Village Project Implementation Committee (VPIC) under Villah Level Micro Action Plan (VLAMP), which had earlier been assessed by the Field Engineer and Water Resources Department. During the visit, the team carefully evaluated the locations and, based on observations and discussions with VPIC members, identified adjustments needed for project estimates to better align with site conditions. The VPIC expressed full cooperation to support the updated implementation plans, ensuring smooth execution of VLAMP interventions.



Joint Field Inspection – Financial Participatory Appraisal 2 Implementation

On 26 November 2025, the Catchment Management Unit Engineers, together with the Livelihood sector team and External Experts from SPMU, conducted a joint field inspection at Laitkyrhong, Mawkyntew Block and Ielpomtiah, Mawkynteng Block. The team reviewed ongoing FPA 2 activities, assessed progress, and ensured that implementation remained aligned with project standards.



GPS App Demonstration and Field Visit at Thangsning Village

On 24 November 2025, the Catchment Management Unit team conducted a GPS App demonstration and field visit at Thangsning Village, Mawkyntew Block. The session engaged Village Community Facilitator members and local landowners, providing hands-on training on using GPS tools for land demarcation. During the visit, three plots were successfully identified and demarcated, ensuring clear boundaries and supporting planning for upcoming project interventions.

PROGRESS OVERVIEW

PROTECTION OF VULNERABLE CATCHMENT AREAS IN MEGHALAYA PROJECT

CONSOLIDATED PROGRESS OVERVIEW OF UMIEW & GANOL CATCHMENTS AS ON 27TH NOVEMBER 2025



220

Completed Project
Awareness



167

Village Project
Implementation
Committee (VPIC)
formed



166

Village Community
Facilitator Identified
(VCF)



114

Participatory Rural
Appraisal (PRA)
Conducted



80

Financial Participatory
Appraisal (FPA)
Contest 1 conducted



141

Financial Participatory
Appraisal (FPA)
Contest 2 & 3
conducted

SNIPPETS

SUSTAINABLE LAND MANAGEMENT PROJECT



DEMONSTRATION ON BORDEAUX PASTE APPLICATION AND MECHANICAL PEST CONTROL IN CASHEW

A field demonstration was conducted at the cashew nut demonstration plot on preparing and applying Bordeaux paste, along with mechanical control measures for effective pest and disease management. The session focused on showing how Bordeaux paste can help manage major cashew diseases such as gummosis, stem canker, collar rot, and pink disease. During the demonstration, the paste was applied 3-4 feet above the base of the tree to protect the trunk and prevent the entry of the cashew stem and root borer, a serious pest affecting cashew orchards. Mechanical control methods were also demonstrated, where cellotape was wrapped around the tree trunk about half a foot above the ground to restrict the movement of ants and mealy bugs into the tree. These interventions aim to strengthen integrated pest management practices and promote healthier cashew plantations.

PANCHAGAVAYA DEMONSTRATION

A demonstration session was conducted on the preparation of Panchagavya, highlighting its role as a micronutrient-rich organic input and a natural growth promoter that enhances plant health and soil fertility. Farmers were also briefed on the key benefits of Panchagavya, including improved plant vigor, better nutrient uptake, and increased crop productivity.

As part of ongoing organic initiatives, the ICS team prepared the third batch of Jeevamruth to support soil enrichment and promote sustainable crop growth.

The Clover team additionally reviewed the documents collected by the Internal Inspectors to ensure proper record-keeping and compliance with organic certification requirements.





**PES AWARENESS OUTREACH
ACROSS MEGHALAYA**

From 20-26 November 2025, Green Field Associates conducted a week-long series of PES awareness programmes across major regions of Meghalaya, covering blocks such as Umsning, Laskein, Thadlaskein, Mairang, Samanda, Jirang, Mawshynrut, Saipung, Gambegre, Mawphlang, Songsak, and Baghmar. The initiative strengthened community understanding of Payment for Ecosystem Services (PES) and sustainable natural resource management through interactive sessions. The outreach also included field-based conservation activities, including boundary demarcation in Rerapara Block and deforestation ground-truthing at Jetdoba Community Reserve, Resubelpara, integrating awareness with real-time environmental monitoring.



Strengthening Village Community Facilitator (VCF) for 2026 Plantation

Community-led natural resource management in the Umiew Catchment received a significant boost in September and October 2025, as the Catchment Management Unit team completed a series of Plantation Awareness Trainings for Village Community Facilitators (VCFs). The sessions were designed to prepare VCFs for the upcoming 2026 plantation season by equipping them with practical knowledge, stronger communication skills, and the confidence to engage proactively with landowners and village communities.

Over the two months, 56 VCFs from diverse villages participated in multi-batch trainings held at Sadew, 12 Mer (Umlmyung), and Laitkor Mawrie Lumheh. These sessions covered key topics such as plantation planning, site preparedness, community mobilisation, and the long-term ecological benefits of voluntary land contribution.

Participation was wide and diverse. VCFs represented villages such as Sadew, Mawsawa, Mawnianglah, Madan Ingsaiem, Marbanang, Lyngkien Myllem, Madan Lyngkhi, Wahpein, Pomkaniew, Mawtharia, Mawpynthih, and many more across EKH. Additional participants joined in October from villages including Mawngap Lumparing, Lyngkynshieh, Marbisu, Pdengshnong, Laitkynsew, Tiewlieh Steplakrai, Nongkrem Kharbuli, Warbah, and others.

By the end of the training, VCFs have had a greater clarity, renewed motivation, and practical skills to engage their communities effectively. Their strengthened capacity is expected to play a vital role in ensuring smooth mobilization, timely preparation, and successful plantation implementation across the Umiew Catchment in 2026.

Follow us on



mbma.org.in | mbda.gov.in



[mbmashillong](https://www.facebook.com/mbmashillong)



[Meghalaya Basin Development Authority MBDA](https://www.youtube.com/MeghalayaBasinDevelopmentAuthorityMBDA)



[mbda_meghalaya](https://twitter.com/mbda_meghalaya)



[mbda_shillong](https://www.instagram.com/mbda_shillong)

