

Newsletter

10 April 2026

KEY HIGHLIGHTS



Government of Meghalaya
Meghalaya Basin Development Authority | Meghalaya Basin Management Agency

The Meghalaya Basin Management Agency (MBMA) and Meghalaya Basin Development Authority (MBDA) implement citizen-centric, community-driven projects to improve the quality of life for Meghalaya's citizens, bridge developmental gaps, and promote natural resource management, catchment area protection, forest management, agroecological practices, and market development. Incorporated under the State's Planning, Investment Promotion & Sustainable Development Department, MBMA and MBDA partner with multilateral agencies, banks, non-profits, UN organizations, government departments, and community groups to implement their works.

Coverage spans across Meghalaya through Externally Aided Projects (EAP) such as the IFAD-supported Meghalaya Livelihoods and Access to Markets Project (Megha-LAMP), the JiCA-funded Project for Community-based Forest Management and Livelihood Improvement in Meghalaya (MegLIFE), and the KW Development Bank-funded projects - the Sustainable Land Management Meghalaya Project (SLM) and the Protection of Vulnerable Catchment Area in Meghalaya (MegARISE) Project.

State programmes being implemented include the Promotion and Incubation of Market-Driven Enterprises (PRIME), the Farmers Collectivization for Upscaling Production and Marketing Systems (FOCUS), the Smart Village Movement (SVM), the Grassroot Level response Towards Ecosystem Enhancement and Nurturing (GREEN Meghalaya), the Cluster Development Programme (CDP), the Pradhan Mantri Janjatiya Vikas Mission (PMJVM) in Meghalaya, and the Meghalaya State Bamboo Mission (MSBM).

EXTERNALLY AIDED PROJECTS

Megha-LAMP

Meghalaya Livelihoods and Access to Markets Project

MegLIFE

Project for Community-based Forest Management and Livelihood Improvement in Meghalaya

MegARISE

Protection of Vulnerable Catchment Areas in Meghalaya Project

SLM

Sustainable Land Management Meghalaya Project

PRIME

Promotion and Incubation of Market Driven Enterprises

FOCUS

Farmers Collectivization for Upscaling of Production and Marketing Systems

SVM

Smart Village Movement

GREEN Meghalaya

Grassroot Level response Towards Ecosystem Enhancement and Nurturing Meghalaya

CDP

Cluster Development Programme

PMJVM

Pradhan Mantri Janjatiya Vikas Mission in Meghalaya

MSBM

Meghalaya State Bamboo Mission

STATE PROGRAMMES










PROGRESS OVERVIEW

MEGHALAYA LIVELIHOODS AND ACCESS TO MARKETS PROJECT

MeghaLAMP Agricultural Commodities Transports During 2025

Commodities Transported

-  Lakadong Turmeric (Powdered)
-  Sliced & Dried Lakadong Turmeric
-  Sliced & Dried Ginger
-  Black Pepper
-  Fresh Ginger
-  Pineapple
-  Strawberry



Major Market Reached

- Mumbai
- Jharkhand
- Bangalore
- Chennai
- Farmgate
- Dubai
- Maldives
- Kamrup
- Tamulpur
- Delhi
- Guwahati
- Indore
- Punjab
- Gandhinagar

Products Transported by IVCS and Farmers of Meghalaya to Major Markets Across South Asia Through Project Intervention

Sliced & Dried Lakadong Turmeric	Sliced & Dried Ginger	Black Pepper	
<p>Jharkhand: 48 kg exported, generating Rs. 10,560.</p> <p>Kamrup: 15,000 kg exported, generating Rs. 34,95,000.</p> <p>Punjab: 100 kg exported, generating Rs. 22,000.</p> <p>Chennai: 15,000 kg exported, generating Rs. 33,75,000.</p>	<p>Mumbai: 12,285 kg exported, generating Rs. 28,25,550.</p> <p>Guwahati: 600 kg exported, generating Rs. 1,59,600.</p> <p>Kamrup: 34,846.70 kg exported, generating Rs. 91,99,078.</p> <p>Tamulpur: 9,000 kg exported, generating Rs. 22,50,000.</p> <p>Bengaluru: 5,296 kg exported, generating Rs. 14,08,736.</p>	<p>Mumbai: 10,000 kg exported, generating Rs. 62,98,000.</p>	
Lakadong Turmeric (Powdered)	Pineapple	Fresh Ginger	Strawberry
<p>Bangalore: 90 kg exported, generating Rs. 27,800.</p> <p>Gandhinagar: 5 kg exported, generating Rs. 1,750.</p> <p>Indore: 200 kg exported, generating Rs. 40,000.</p>	<p>Delhi: 8,849 kg exported, generating Rs. 4,86,695.</p> <p>Farmgate: 1,500 kg exported, generating Rs. 33,000.</p> <p>Guwahati: 900 kg exported, generating Rs. 19,800.</p>	<p>Delhi: 6,320 kg exported, generating Rs. 4,42,400.</p> <p>Dubai: 15,000 kg exported, generating Rs. 14,74,500.</p> <p>Maldives: 4,890 kg exported, generating Rs. 5,13,450.</p>	<p>Guwahati: 35,000 kg exported, generating Rs. 8,08,500.</p>

SNIPPETS

SUSTAINABLE LAND MANAGEMENT



DEMONSTRATION CONDUCTED | MANAGING GUSMOSIS IN CASHEW TREES

A practical demonstration was conducted at the Cashewnut Demonstration Plot of Rongtenabak IVCS on managing gummosis in cashew trees using cloth wrapping with AG-Gro on Trichoderma-treated bark.

During the activity, the infected bark was first carefully cleaned to remove diseased portions. A paste of Trichoderma was then applied to the affected area, followed by the application of AG-Gro. The treated portion was subsequently wrapped with cloth to protect the site, retain moisture, and support faster healing of the tree.



DEMONSTRATION CONDUCTED | SEED SOWING | SCIENTIFIC METHODS

Demonstration conducted at Rongsang Dadenggre IVCS Ltd., Dadenggre Block, on seed sowing in the demonstration plot using both traditional farmer practices and recommended scientific methods.

The activity highlighted the differences in sowing techniques, spacing, and crop management approaches, providing farmers with an opportunity to compare practices and understand the benefits of improved scientific methods for better crop establishment and productivity.

PROGRESS OVERVIEW

SUSTAINABLE LAND MANAGEMENT

What is the SLM Project?

The Sustainable Land Management (SLM) Project is an initiative of the Government of Meghalaya, implemented through Meghalaya Basin Management Agency (MBMA).

The Project Focuses On:

- ✓ Sustainable and improved farming practices
- ✓ Better soil health and productivity
- ✓ Improved market access and better prices for farmers.

IMPLEMENTING AGENCIES



Grant Phase Overview

93

Villages Covered
Across 20 blocks in 12 districts

3595

Farmers engaged
Total participation in organic practices

1193

Hectares Under Cultivation
Sustainable land management area

PGS Certification



- **487.30** hectares under natural farming
- **81.86** hectares traditional cultivation converted to organic
- **21** local groups covering **252** households
- **7** groups achieved organic status

NPOP Certification



- **4** IVCS and **1** FPO under certification
- **1,000+** acres geo-fenced
- **700+** farmers sensitized
- **5** ICS systems established

1,740 farmers have adopted natural farming covering 487.30 hectares. 24 Farmer Field Schools established for continuous learning.



Storage Infrastructure

30 CMCs with enhanced storage for peak pricing and year-round processing



Irrigation Systems

39 facilities: **24** drip irrigation with water source development, **15** solar pumps installed



Processing Facilities

6 CMCs with machinery for ginger and turmeric primary processing

Focus Crops



Ginger



Black Pepper



Orange



Turmeric



Pineapple



Vegetables



Jackfruit



Bay leaf



Cashew

SNIPPETS

PROTECTION OF VULNERABLE CATCHMENT AREAS IN MEGHALAYA PROJECT



2 FIELD VISITS ADVANCE LOCAL LIVELIHOOD PLANNING AND PROGRESS MONITORING

On 2 April 2026, the Umiew team, along with the Catchment Project Manager, visited Diengkynthong to take forward discussions on establishing a local food livelihood project based on the Financial Participatory Appraisal 2 winning idea. The team also visited Nongthymmai Pdeng to review the progress of ongoing activities under Financial Participatory Appraisal 2 and the Village Level Micro Action Plan, focusing on implementation status and field-level outcomes.

86 PARTICIPANTS ENGAGED IN FPA CONTEST-1 UMIEW CATCHMENT

On 31 March 2026, the Catchment Management Unit team conducted Financial Participatory Appraisal 1 at Laitjem under Mawphlang Block, with active participation from 86 children, creating early engagement in community planning.



18 COMMUNITY MEMBERS PARTICIPATE IN PARTICIPATORY RURAL APPRAISAL

On 7 April 2026, the Umiew Catchment Management Unit team conducted a Participatory Rural Appraisal in Myllem Umsaw under Myllem Block, with 18 community members, including village leaders, actively taking part.



19 PARTICIPANTS PRESENT LIVELIHOOD AND CONSERVATION IDEAS UNDER FINANCIAL PARTICIPATORY APPRAISAL 2 AND 3

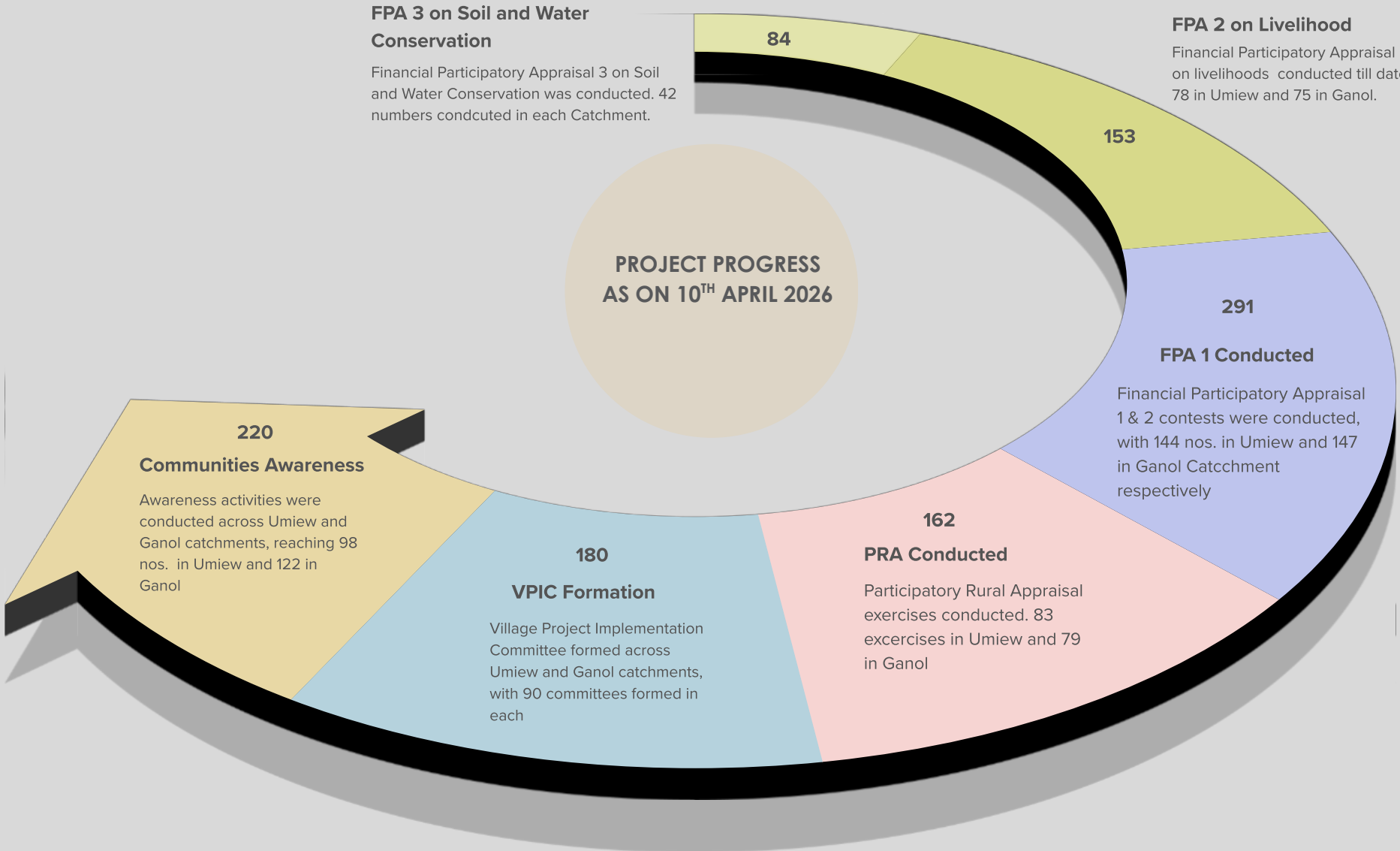
On 7 April 2026, the Umiew team conducted Financial Participatory Appraisal 2 and 3 at Umiew Maw U Sam under Mawryngkneng Block. Oyster mushroom cultivation and retaining wall construction emerged as the winning proposals from 19 participants.



PROGRESS OVERVIEW

PROTECTION OF VULNERABLE CATCHMENT AREAS IN MEGHALAYA PROJECT

Achievement Update



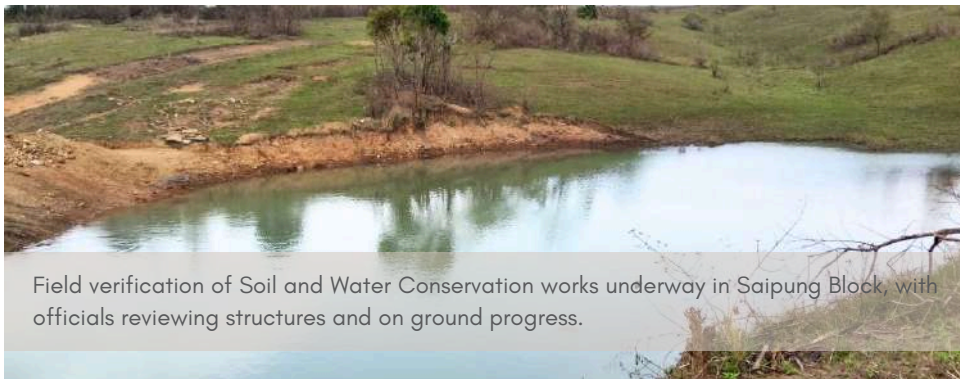
SNIPPETS

PROJECT FOR COMMUNITY-BASED FOREST MANAGEMENT AND LIVELIHOOD IMPROVEMENT IN MEGHALAYA



KEY PRIORITIES REVIEWED TO STRENGTHEN LIVELIHOODS AT TARAPARA IVCS

On 9 April 2026, Tarapara Integrated Village Cooperative Society Ltd., South West Garo Hills, held a general meeting to review working capital utilisation under the Livelihood Improvement Finance Company of Meghalaya, assess Self Help Group loan repayments, and track trial marketing progress. The discussion also focused on improving record keeping, scaling group enterprises, and preparing for the upcoming Annual General Meeting, reinforcing efforts toward stronger financial governance and sustainable livelihoods.



Field verification of Soil and Water Conservation works underway in Saipung Block, with officials reviewing structures and on ground progress.

BAMBOO PROPAGATION TAKEN UP AT MYRDON NONGBAH

On 2 April 2026, bamboo propagation was carried out at Myrdon Nongbah Village Project Implementation Committee under the guidance of the Project Area Forester, promoting proper techniques and best practices. The initiative supports sustainable resource management while creating long term livelihood opportunities through improved bamboo cultivation.



PIGLET VACCINATION AND TAGGING CONTINUED AT UMTASOR MAWDKHAR

On 8 April 2026, the Block Project Management Unit Umsning team carried forward piglet vaccination and ear tagging at Umtasor Mawdkhar Village Project Implementation Committee. The activity supports disease prevention and improves livestock tracking, contributing to better productivity and reduced losses for farming households.

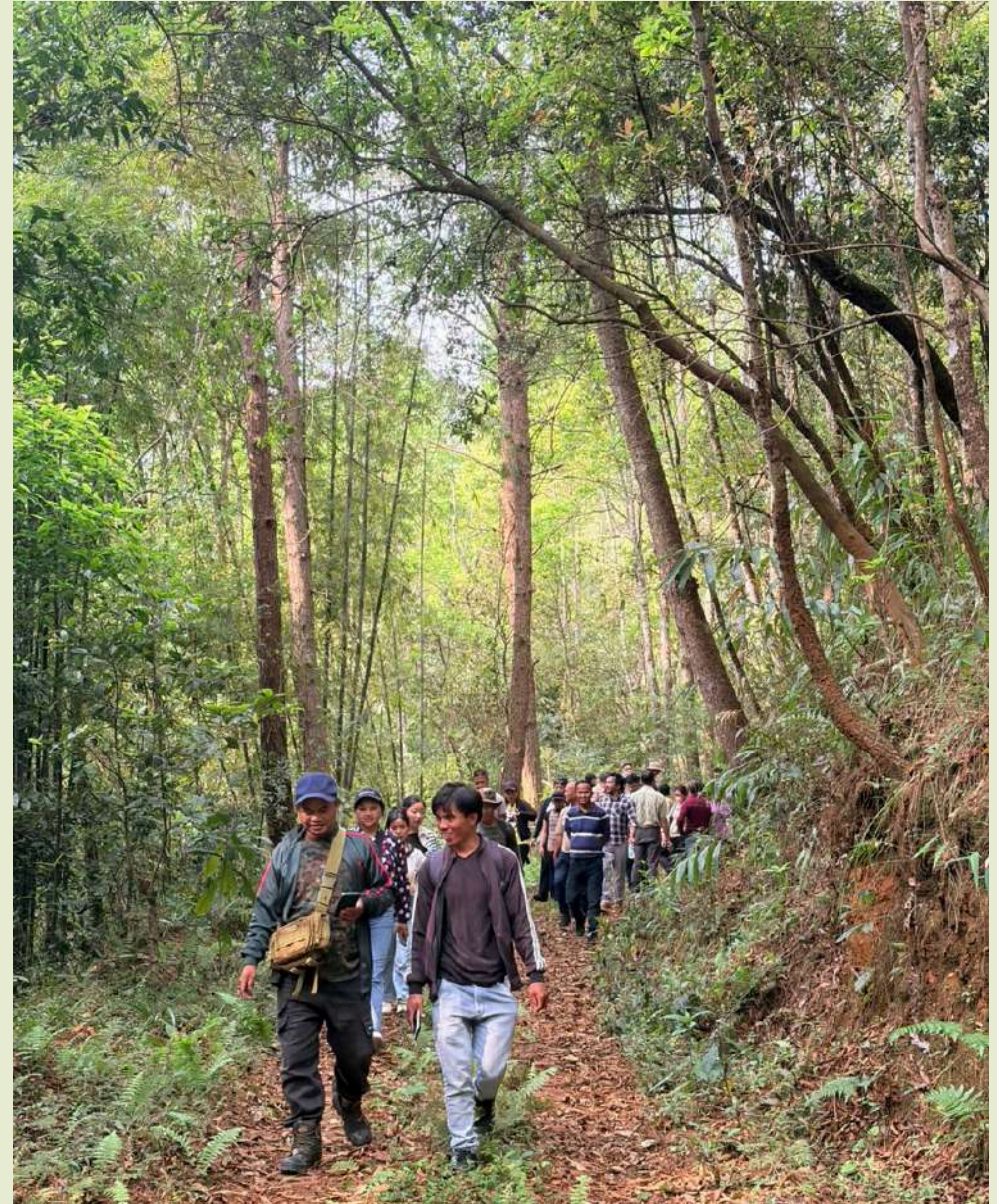


SHG MOBILISATION DRIVE CONDUCTED AT MYNTRIANG

On 9 April 2026, a Self Help Group mobilisation drive was carried out at Myntriang Village Project Implementation Committee in East Jaintia Hills in collaboration with FOCUS. The initiative saw active community participation, strengthening grassroots institutions and promoting collective ownership, with a focus on expanding livelihood opportunities and improving financial inclusion.

PROGRESS OVERVIEW

PROJECT FOR COMMUNITY-BASED FOREST MANAGEMENT AND LIVELIHOOD IMPROVEMENT IN MEGHALAYA





EXPERTS AND COMMUNITY MEMBERS COLLABORATE ON BAMBOO COTTAGE DESIGN

A two day workshop under the Meghalaya State Bamboo Mission brought together international and national experts with local community members to co design a bamboo cottage model. The initiative combined technical expertise with traditional knowledge through a participatory approach, with field engagement at Rangthylliang village and site assessment at the Shitkhat Living Heritage Experience, including interaction with local community groups.

The second day, held at the Meghalaya Basin Development Authority office, focused on site analysis, community consultation, and design development. The exercise established a strong foundation for a sustainable bamboo cottage model that reflects local context, cultural identity, and community aspirations.

THE BAMBOO ARCHITECTS OF UMNANGRIANG

How Local Mentorship and 10,000 Seedlings are Growing a New Economy

In Umniangriang, the MegLIFE project is turning a traditional landscape into a professional community enterprise. By bridging the gap between local ambition and scientific expertise, the Village Project Implementation Committee (VPIC) is transforming bamboo from a simple backyard resource into a sustainable engine for growth and environmental restoration.

The nursery has successfully built a foundational stock of 10,000 high-quality bamboo seedlings, ensuring the community no longer relies on external or inferior planting materials.

While currently in its initial stages, the nursery is designed for rapid scale. Once full propagation begins, seedling volume is expected to triple, dramatically increasing the capacity for regional distribution.

Under the mentorship of a retired forester, villagers have mastered scientific propagation and disease control. This passing of knowledge ensures the nursery is managed with professional precision.

The initiative is driven by the active participation of local women and youth. By leading the technical and daily operations, these groups are ensuring the project's benefits stay rooted within the village.

10,000 SEEDLINGS ESTABLISHED

2X TO 3X

GROWTH POTENTIAL

EXPERT-LED SKILL DEVELOPMENT

Beyond future revenue, the nursery acts as a conservation engine. Every sapling helps improve green cover and protect local soil and water, proving that ecological health and economic stability go hand-in-hand.



Project for Community-Based Forest Management and Livelihoods Improvement in Meghalaya

Inclusive Community Ownership



Follow us on



mbma.org.in | mbda.gov.in



[mbmashillong](https://www.facebook.com/mbmashillong)



Meghalaya Basin Development Authority MBDA



[mbda_meghalaya](https://twitter.com/mbda_meghalaya)



[mbda_shillong](https://www.instagram.com/mbda_shillong)

